

Boulder City Conservation Easement with Proposed Solar Developments and Proposed Transmission Terminal Site

Renewable Energy Development on the Boulder City Conservation Easement (BCCE)

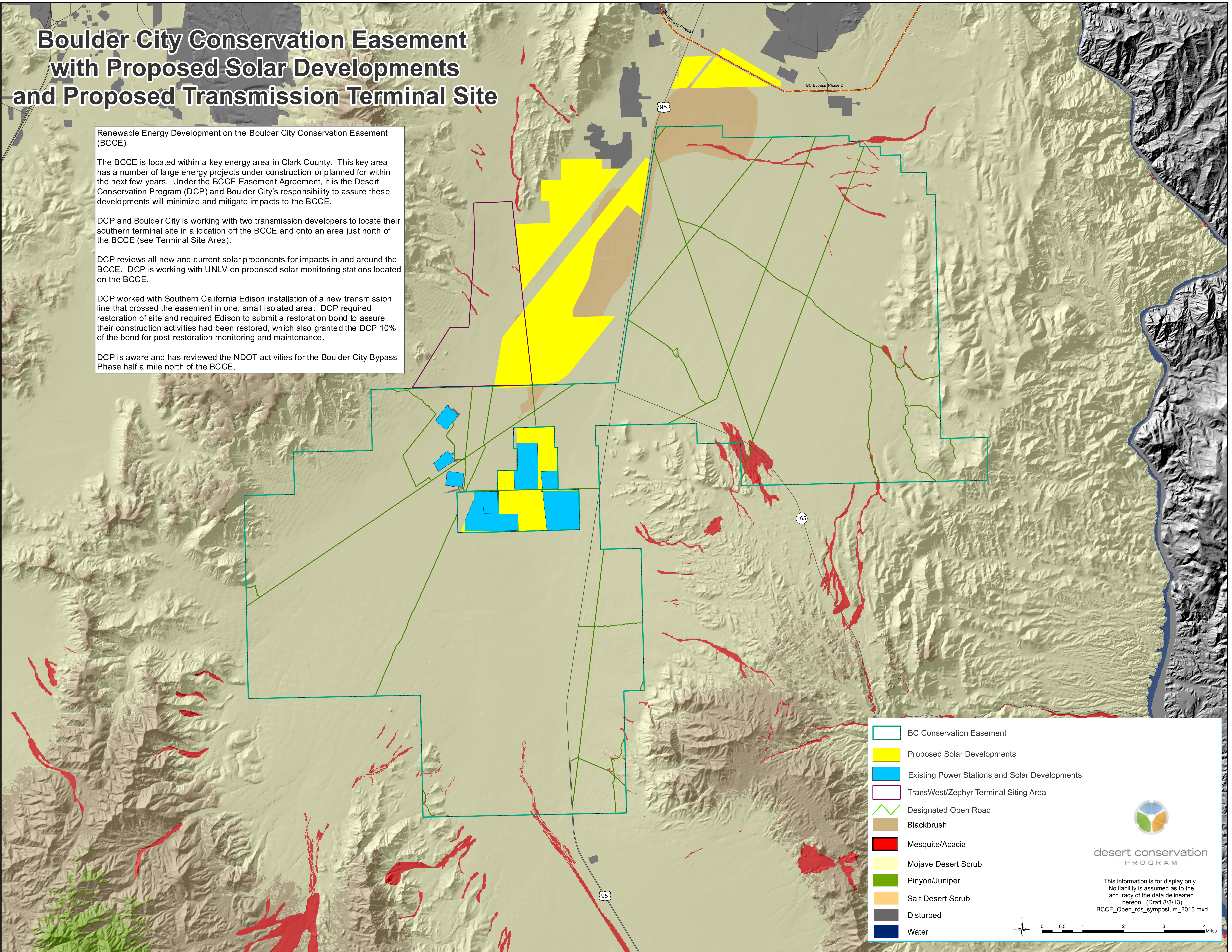
The BCCE is located within a key energy area in Clark County. This key area has a number of large energy projects under construction or planned for within the next few years. Under the BCCE Easement Agreement, it is the Desert Conservation Program (DCP) and Boulder City's responsibility to assure these developments will minimize and mitigate impacts to the BCCE.

DCP and Boulder City is working with two transmission developers to locate their southern terminal site in a location off the BCCE and onto an area just north of the BCCE (see Terminal Site Area).

DCP reviews all new and current solar proponents for impacts in and around the BCCE. DCP is working with UNLV on proposed solar monitoring stations located on the BCCE.

DCP worked with Southern California Edison installation of a new transmission line that crossed the easement in one, small isolated area. DCP required restoration of site and required Edison to submit a restoration bond to assure their construction activities had been restored, which also granted the DCP 10% of the bond for post-restoration monitoring and maintenance.

DCP is aware and has reviewed the NDOT activities for the Boulder City Bypass Phase half a mile north of the BCCE.



	BC Conservation Easement
	Proposed Solar Developments
	Existing Power Stations and Solar Developments
	TransWest/Zephyr Terminal Siting Area
	Designated Open Road
	Blackbrush
	Mesquite/Acacia
	Mojave Desert Scrub
	Pinyon/Juniper
	Salt Desert Scrub
	Disturbed
	Water



desert conservation
PROGRAM

This information is for display only.
No liability is assumed as to the
accuracy of the data delineated
hereon. (Draft 6/8/13)
BCCE_Open_rds_symposium_2013.mxd

